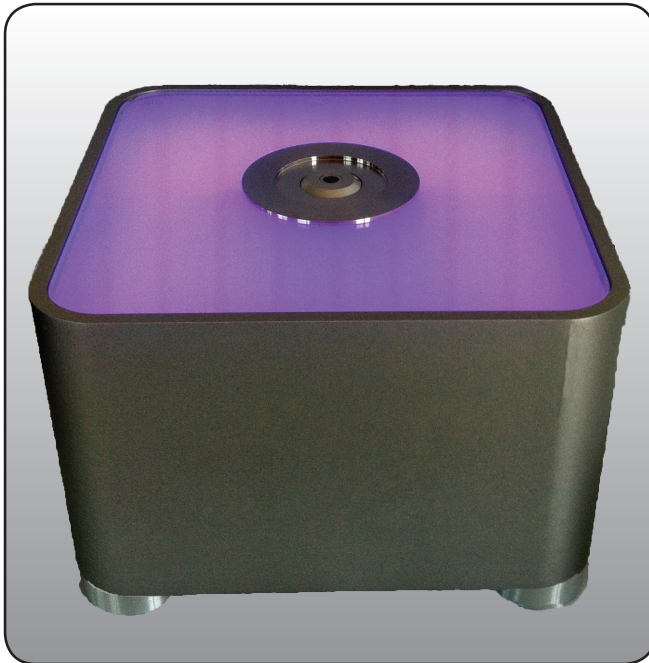


ColorLife ColorCube

Laboratory Spectrophotometer



- **Compact** - State of the art laboratory system - implementing newest LED illumination technology
- Futuristic design "Made in Germany"
- Solid aluminium housing with high quality hard anodised coating
- Grating spectrometer scanning in 3.5nm resolution (>100 steps)
- Large laminated safety glass cover status dependent colour illumination

The ColorLife ColorCube benchtop spectrophotometer - minimalistic and functional design - works easy and looks good.

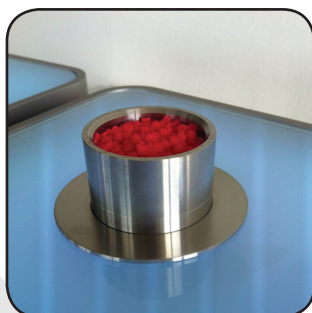
Made from only the highest quality materials: solid aluminium housing, stainless steel trimming, illuminated safety glass cover and combining this with state of the art metrology technology.

Using high performance LED's, with a life span of over 20 years and a grating spectrometer we can ensure perfect stability over its life time.

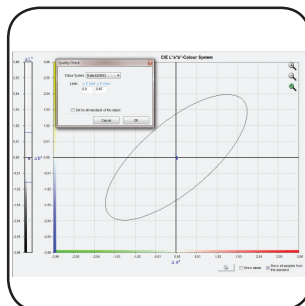
The ColorCube series can be connected easily via Bluetooth or USB cable with any Windows PC or tablet, together with the comprehensive quality assurance software offers your company the perfect solution for your laboratory.

The ColorCube series is available in different versions, with different scanning areas from 2 mm (d/8° geometry) to 80 mm (d/0° geometry) for a wide range of applications.

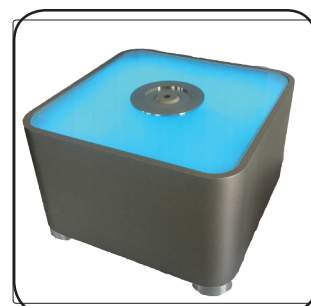
You can not only measure colour data with the ColorCube quickly and accurately, but also manage the data using the our QS-software **ColorDaTra** to evaluate, analyse and create professional reports in all common colour scales.



d/0° geometry and 38 mm scanning area



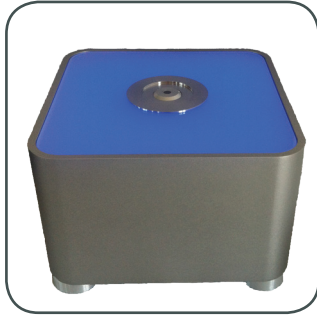
Quality control
PC software ColorDaTra



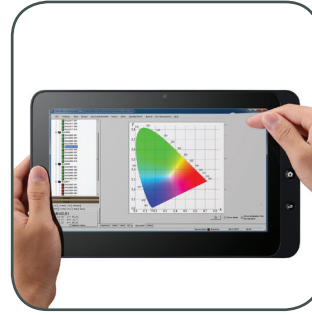
d/8° geometry and 6 mm scanning area

Further features

- Robust stainless steel sample holders with replaceable glass floor for measuring granules, powders etc.
- Fast measuring time - approximately 0.5 seconds for a single scan
- Unique safety glass cover changes colour according to the status of the instrument
- Extremely robust housing milled from a solid aluminium cube and then treated in a number of steps to achieve the highest quality finish possible



ColorCube benchtop system
with a d/8° geometry



Local PC connected to a central
database via the ColorDaTra
software

Technical Data

Measurement geometries	45°/0° and d/8° according to the DIN 4512-8: 3 to 15 mm measuring spot d/0° diffuse illumination, 0° viewing angle: 38 mm or 80 mm scan area
Standard illuminants	D65, D50, D55, A, C, F11
Standard observer	2° and 10°
Spectral resolution	Holographic grating spectrometer. FWHM at 500 nm < 10 nm. Sampling rate 3.5 nm with 115 x 16-bit values per scan
Spectral range	400 to 700 nm
Colour metric values	CIE L*a*b*; CIE L*C*h; Yxy; X,Y,Z and other common scales
Illumination	High performance LED's and integrating sphere (d/8°)
Measuring area	According to version between 2 mm and 80 mm
Calibration	Certified BAM (Bundesanstalt für Materialforschung, Berlin) white reference
Repeatability	0.03 ΔE CIELab
Calibration warning	Reminds the user to recalibrate after a variable period
PC-Interface	Bluetooth 2.0, USB 2.0, WiFi optional
Dimensions (max.)	150 x 230 x 230 (H x L x W)
Weight	11.4 Kg
External Power supply	110 - 240 VAC/50-60 Hz

Included in the delivery are:

- White calibration tile with BAM (Bundesanstalt für Materialforschung) certificate
- Black reference standard
- Metal or glass cuvettes with light proof caps for non solid samples
- PC software ColorDaTra Professional licence with free updates
- USB cable