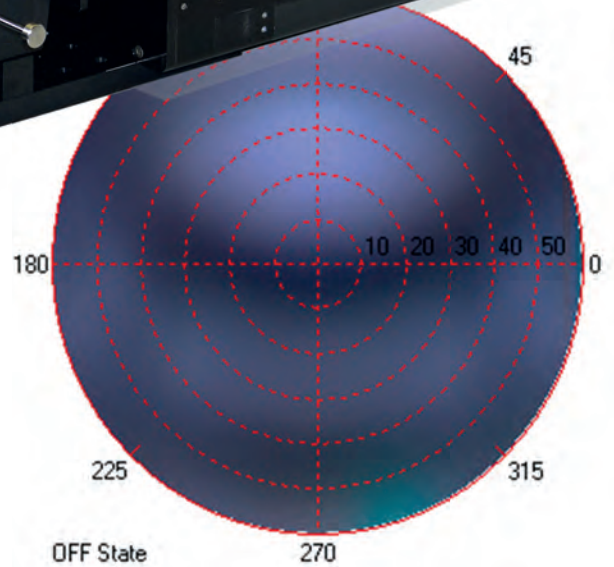
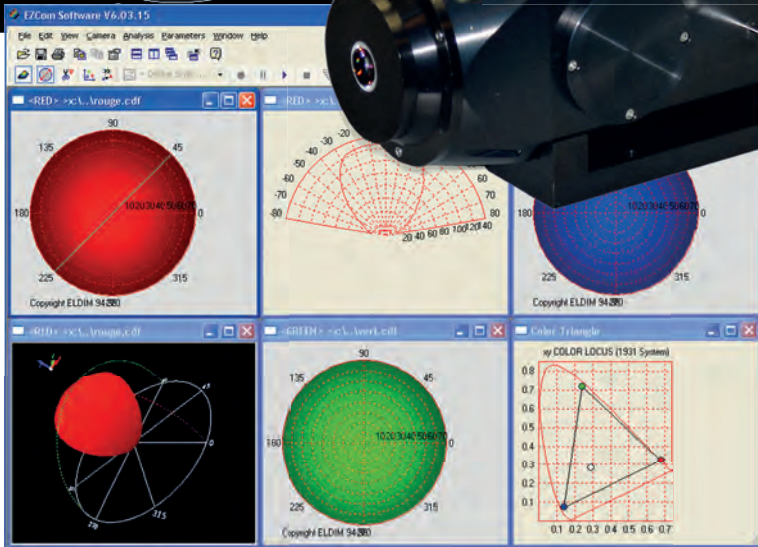
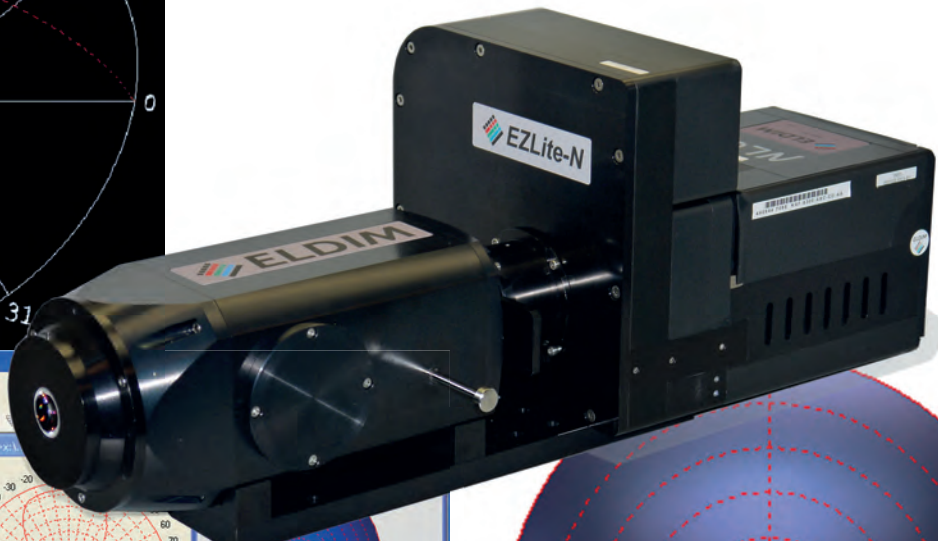
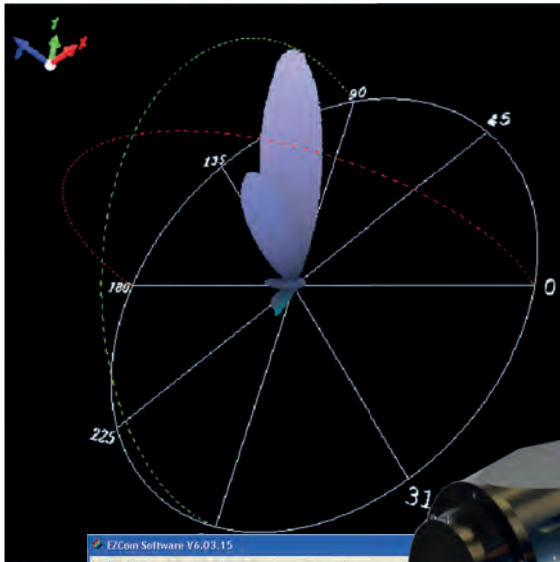


EZLite-N



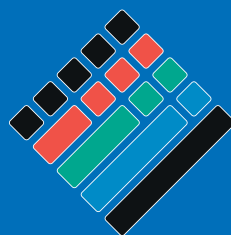
FEATURES

- Color measurements in less than 30s
- High color and luminance accuracy
- Viewing angle aperture : $\pm 60^\circ$
- Resolution : $0.05^\circ/\text{CCD pixel}$
- Cooled Sensor
- Non-contact measurements

APPLICATIONS

- Viewing angle analysis in Q&A
- VESA/ICDM-IDMS standards compliance tests
- Goniometric types measurements

EZLite-N allows getting reliable viewing angle luminance and color data. It provides fast and accurate measurements of the full viewing cone with high angular resolution. EZLite-N measures a $\pm 60^\circ$ viewing angle luminance map in less than 10s.



ELDIM

OPTICAL METROLOGY FOR DISPLAYS

Specifications		EZLite-N
Viewing Angle	Incident angle Azimuth angle	0-60° 0-360°
Measuring area	Maximum diameter Minimum diameter	2mm 166µm
Optimum distance	Ensure light coming from same spot at any angle	4.5mm
Accuracy	Luminance Chromaticity (x,y) RMS	±3% 0.002
Performances	Angular resolution Peltier cooled sensor A/D converter Angular optical resolution	0.05°/CCD pixel(*) Yes 14 bits 0.75°(*)
Neutral densities	For luminance adjustment Selection mode	0.5, 1, 2, 3 Automated
Chromaticity	Color Filters Additional Filters	6 Any type
Measurement Modes	Luminance Chromaticity Reflective (option)	Yes Yes Full diffused or collimated beam illumination
Luminance Range	Minimum (cd/m ²) Maximum (cd/m ²) - on option	0.001 more than 800 000 cd/m ²
Short term repeatability	Luminance Chromaticity (x,y) RMS	±0.02% 0.0001
Use condition	EZLite-N EZLite-NG	0°C to 30°C non condensing -40°C to +85°C non condensing

(*) The resolution of the system must be considered according to the effective optical resolution.

Specifications can be change without notice

EZLite-N Outer dimension (unit mm)

