

355 nm CW compact DPSSL , single longitudinal mode (SLM) 10 mW

The Cobolt Zouk™ is a continuous-wave diode-pumped solid state laser operating in single frequency at a fixed wavelength of 355 nm and built using proprietary HTCure™ manufacturing technology. The laser has a compact hermetically sealed package and emits a high-quality laser beam with stable characteristics over a wide range of operating conditions. The laser is designed and manufactured to ensure a high level of reliability.

The Cobolt Zouk™ laser is intended for stand-alone use in laboratory environment or for integration as OEM component and is ideal for use in demanding bio-analytical applications such as flow cytometry, laser scanning cytometry, DNA sequencing and confocal microscopy.



Specifications

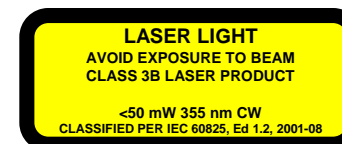
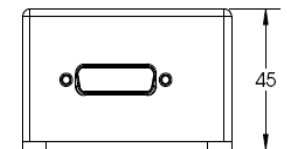
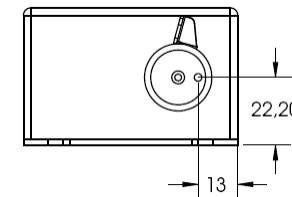
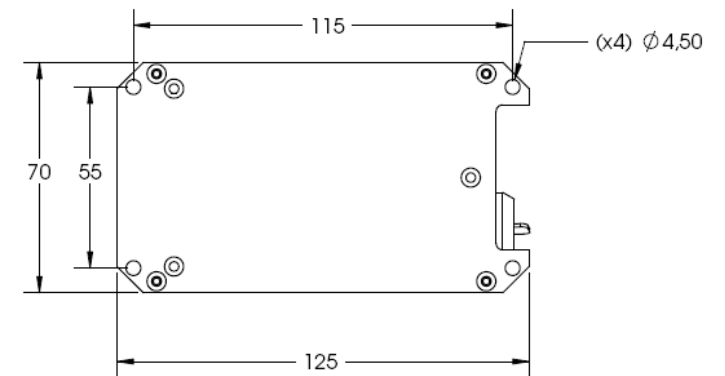
Wavelength	355 nm
Output power	10 mW
Spatial mode	TEM ₀₀ M ² < 1.1
Beam diameter at aperture	700 μm
Beam divergence (full angle)	< 0.7 mrad
Noise, 20 Hz - 20 MHz (pk-pk)	< 2 %
Noise, 20 Hz - 20 MHz (rms)	< 0.2 %
Long-term stability (8 h)	< 2 % (±3 °C)
Beam pointing stability (over 10-40 °C)	< 10 μrad/°C (typical 5 μrad/°C)
Polarization ratio	> 100:1
Total system power consumption	< 66 W
Operating temperature	10-40°C
Laser head dimensions [mm]	125 x 70 x 45
Laser head dimensions [inches]	5.0 x 2.8 x 1.8
Controller (OEM/CDRH) dimensions [mm]	190 x 72 x 28
Controller (OEM/CDRH) dimensions [inches]	7.6 x 2.9 x 1.1
Model number	0355-05-01-pwr-500 CDRH 0355-05-01-pwr-600 OEM

Options & Accessories

Laser heatsink
 Customised interface cable
 RS-232 communication cable

Full specifications can be found in the manual.
 Subject to change without notice. Rev 0912.

Laser Head Dimensions



Class 3B (IEC60825-1), IEC60950-1, UL 60950-1